

**FK FUKU 福客®**

**FK14-320T**

进取不止

**FUKE**

Boutique Manufacturing  
Conquer The World With Quality



## Basic Information

Operating weight

**37.2T**

Dozing capacity

**10m<sup>3</sup>**

Blade width

**4130mm**

Max. torque

**1400N.m**

Rated power

**257KW**

Track gauge

**2140mm**

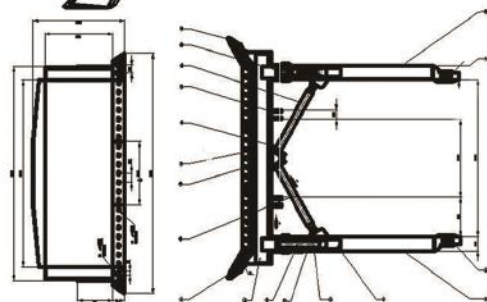
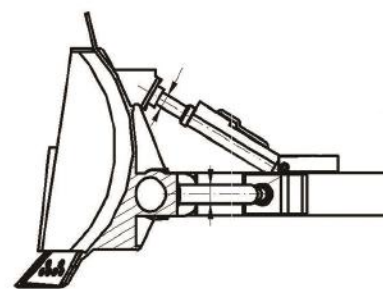
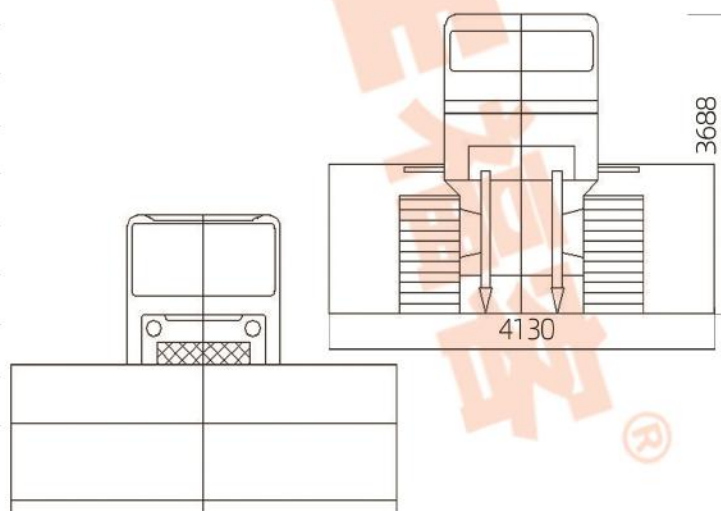
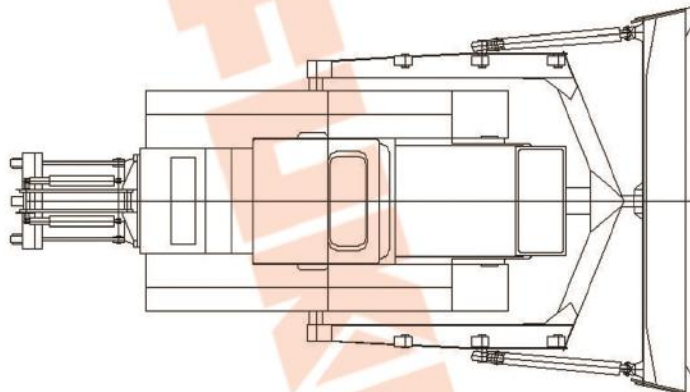
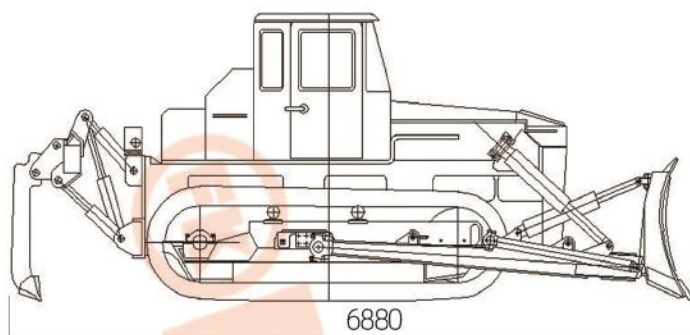


# Technical Specification

Model	FK14-320T
Engine model	Yuchai
Displacement (L)	14.01
Rated power (kw/rpm)	257/2000
Max.torque (N.m/rpm)	1400/1440
Operating weight	37.2 Ton
Dimension(no ripper)(mm)	6880×4130×3688
Grounding length (mm)	3150
Ground pressure(MPa)	0.105
Track gauge (mm)	2140
Dozing capacity(m <sup>3</sup> )	10
Blade width (mm)	4130
Blade height(mm)	1590
Max drop below ground (mm)	560/630
Track shoe width (mm)	560
Pitch (mm)	228.6
Quantity of track link	41
Quantity of Carrier rollers	4
Quantity of Track rollers	14
Max pressure (MPa)	14
Discharge (L/min)	355
Max tractor force (KN)	280
Forward Speed (Km/h)	F1:0-3.6 F2:0-6.6 F3:0-11.5
Rear Speed (Km/h)	R1:0-4.4 R2:0-7.8 R3:0-13.5
Product Features	Excellent efficiency Booster Car air conditioner Protective Device GPS positioning On-board repair tools Fire extinguisher Comfortable operation



# Outline



\*We follows the principle of continuous improvement Product performance parameters will be partially changed due to technical improvements without prior notice.

