

**FK** **FUKE** 福客®

**FUKE**

**Boutique Manufacturing  
Conquer The World With Quality**



**FK14-160T**  
进取不止



## *Basic Information*

Operating weight  
**17T**

Dozing capacity  
**4.55m<sup>3</sup>**

Blade width  
**3390mm**

Max. torque  
**830N.m**

Rated power  
**131KW**

Gradeability  
**30°**

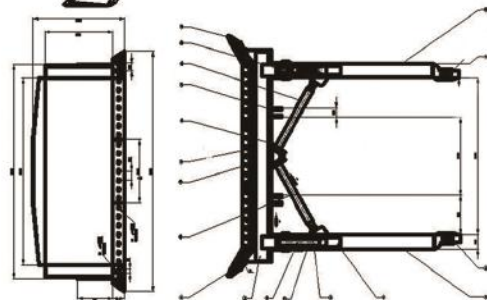
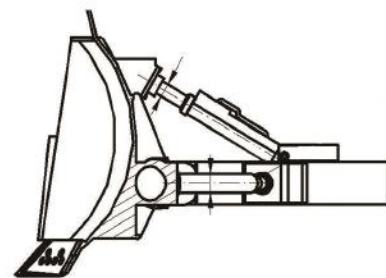
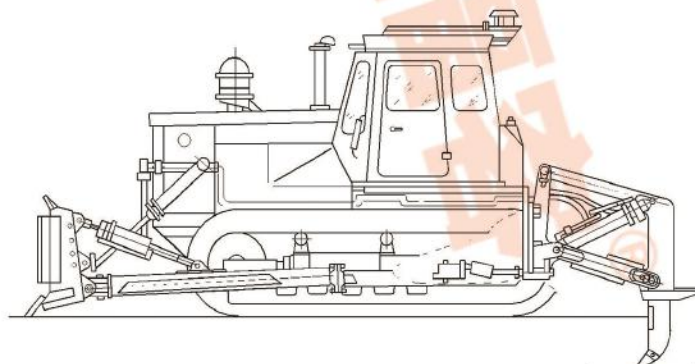
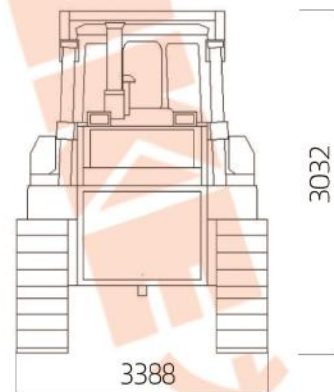
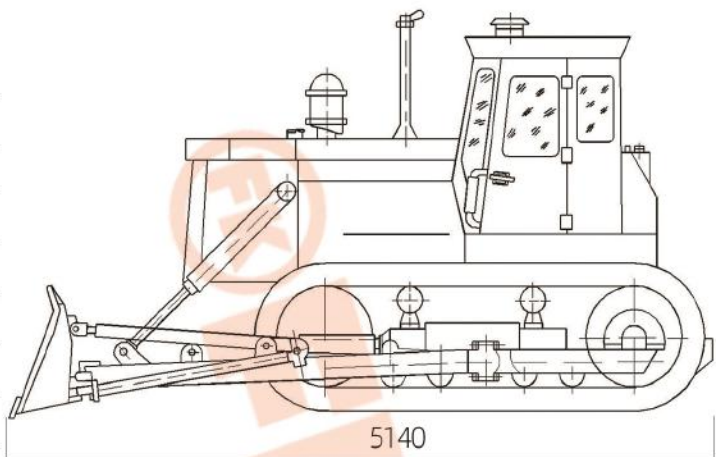


# Technical Specification



# Outline

Model	FK14-160T
Engine model	Yuchai
Displacement (L)	9.726
Rated power (kw/rpm)	131/1850
Max.torque (N.m/rpm)	830/1000-1200
Operating weight	17T
Dimension(no ripper)(mm)	5140×3388×3032
Min ground clearance(mm)	405
Ground pressure(MPa)	0.067
Track gauge (mm)	1880
Dozing capacity(m <sup>3</sup> )	4.55
Blade width (mm)	3390
Blade height(mm)	1150
Max drop below ground (mm)	540
Track shoe width (mm)	510
Pitch (mm)	203.2
Quantity of track link	37
Quantity of Carrier rollers	4
Quantity of Track rollers	12 (8 Double+4 Single)
Max pressure (MPa)	14
Discharge (L/min)	213
Max tractor force (KN)	146
Grade ability	30°
Gear 1st speed (km/h)	3.29
Max speed (km/h)	9.63
Main clutch force (N)	145
Steering clutch force (N)	80
Mechanical transmission force (N)	112
Hydraulic transmission force (N)	46
Product Features	Excellent efficiency Booster Car air conditioner Protective Device GPS positioning



\*We follows the principle of continuous improvement Product performance parameters will be partially changed due to technical improvements without prior notice.

